



Head and Face Protection

Designed for visibility, versatility, comfort and protection in demanding welding, cutting and grinding applications

HEAD & FACE TECHNOLOGIES

Innovative features designed to enhance operator comfort and performance, improving safety and productivity.

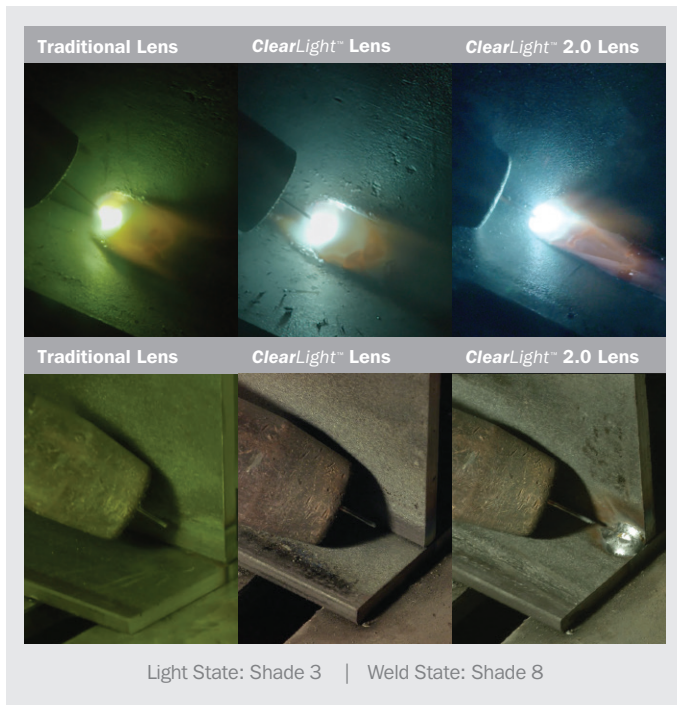


ClearLight™

Designed by welders, for welders – **ClearLight™** Lens Technology is engineered to complement the colors emitted from the welding arc, enhancing clarity and natural color so that you can see more detail.

ClearLight™ has a 1/1/1/2 optical clarity rating that provides a brighter, 3.0 light state, allowing weld operators to keep their hood down in between welds and non-welding tasks within arm's reach of the workpiece, improving safety and productivity.

ClearLight™ 2.0 sharpens clarity and vision, allowing more light to pass through the lens. This enhancement gives welders the most realistic view that's clearer and brighter – before, during and after every weld. Now see the details like never before.



ClearLight™ available on: Classic Series

ClearLight™ 2.0 available on: Digital Performance™, Digital Elite™, Digital Infinity™ and T94™ Series welding helmets.

Visit MillerWelds.com/clearlight to learn more



X-Mode™

Ideal for weld operators who weld out of position, outdoors, or in bright environments. X-Mode™ eliminates light interference and auto darkens the lens based on the electromagnetic field caused by the arc. The lens continuously detects the arc even when sensors are blocked, so the lens darkens when the operator needs it to.

Available on: Classic VSi™, Digital Elite™, Digital Infinity™ and T94™ Series welding helmets along with Weld-Mask™ 2.

Visit MillerWelds.com/x-mode to learn more



InfoTrack™ 2.0

Take control over planning, estimating and evaluating your operations with InfoTrack™ Data Monitoring Technology to improve efficiency and productivity.



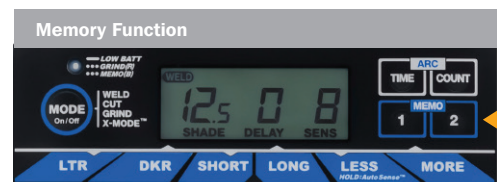
- Arc time
- Arc count

Available on: Digital Elite™, Digital Infinity™ and T94™ Series welding helmets.



Memory Function

Allows welders to easily switch between two preset customized memory settings.



- Memory Function 1
- Memory Function 2

Available on: Digital Elite™, Digital™ Infinity and T94™ Series welding helmets.

“**ClearLight™** is great and helps with eye fatigue and welding for long periods. X-Mode™ makes working outdoors or in areas with fluctuating light great. My Digital Infinity™ helmet stays in place with out-of-position welds. Great product for the price range.

Overall, a great helmet.”

- **Jesse**, Verified Buyer



AutoSense™

By simply pushing and holding a button, AutoSense™ Technology automatically sets the helmet sensitivity by sensing your welding environment. Ideal for weld operators who frequently adjust their settings for changing welding environments.

Available on: Digital Performance™, Digital Elite™, and Digital Infinity™ Series welding helmets.



HDV Technology

Provides a sharp, detailed view at any angle with minimal distortion.

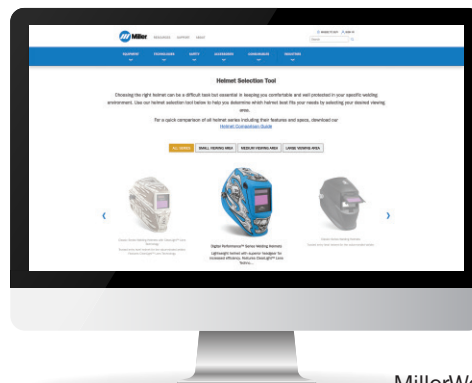


Available on: T94™ Series helmets along with Miller® Face Shield.

Helmet Selection Tool

Choosing the right helmet can be a difficult task but essential in keeping you comfortable and well protected in your specific welding environment. Use our helmet selection tool to help you determine which helmet best fits your needs.

Visit MillerWelds.com/helmets to learn more



HEAD & FACE ACCESSORIES



Helmet Lighting

Increase visibility in low-lit environments with Miller® Helmet Lighting Accessory kits – improving safety and weld quality. Each light has a brightness of 70 lumens to precisely illuminate work pieces.

Low-profile lights stay firmly in place when the hood is raised and lowered. Weighing only 2.5 ounces each, they're made for all-day comfort.

Sold separately.



Visit MillerWelds.com/helmetlighting to learn more



Premium Headgear

Gen 4

Four-point flexible headgear provides a secure fit while oversized comfort cushion maximizes all-day wearability. Includes pivoting top and back bands to provide a better fit and comfort.



Available on: T94™ Series welding helmets.

Gen 3.5

Tilt, angle and depth adjustments, along with the oversized comfort cushion, provide a customized fit for unsurpassed comfort and stability.



Available on: Digital Performance™, Digital Elite™, and Digital Infinity™ Series welding helmets.

HEAD & FACE ACCESSORIES

282013	Helmet Lighting Accessory Kit (Infinity™, Elite™, Performance™, Classic and Face Shield Series)	279080	Helmet Cape (T94™)
281361	Helmet Lighting Accessory Kit (T94™)	217043	CR2450 Lithium Battery
284218	Headgear, Gen 3.5	228028	Job Site Tool Bag
260486	Headgear, Gen 4	770250	Helmet Bag with Miller® Logo
288280	Face Shield Headgear and Crown	212235	Magnifying Lens 0.75 Magnification (4 1/2" x 2" x 5/23")
259637	Hard Hat Adapter, Slotted	212236	Magnifying Lens 1.00 Magnification (4 1/2" x 2" x 5/23")
222003	Hard Hat Adapter, Halo (Elite™, Performance™ and Classic)	212237	Magnifying Lens 1.25 Magnification (4 1/2" x 2" x 5/23")
265315	Hard Hat Adapter, Halo (T94™)	212238	Magnifying Lens 1.50 Magnification (4 1/2" x 2" x 5/23")
251018	Helmet Hook	212239	Magnifying Lens 1.75 Magnification (4 1/2" x 2" x 5/23")
770249	Fabric Headband (T94™, Infinity™, Elite™, Performance™ and Classic)	212240	Magnifying Lens 2.00 Magnification (4 1/2" x 2" x 5/23")
253882	Helmet Bib (Infinity™, Elite™, and Classic)	212241	Magnifying Lens 2.25 Magnification (4 1/2" x 2" x 5/23")
279078	Helmet Bib (T94™)	212242	Magnifying Lens 2.50 Magnification (4 1/2" x 2" x 5/23")
		770660	Shade 8 Auto-Darkening Lens (2" x 4-1/4")
		287828	Shade 9 Auto-Darkening Lens with ClearLight™ 2.0 (2" x 4-1/4")
		287830	Shade 10 Auto-Darkening Lens with ClearLight™ 2.0 (2" x 4-1/4")
		287833	Shade 11 Auto-Darkening Lens with ClearLight™ 2.0 (2" x 4-1/4")

Classic Series

Classic Series welding helmets are ideal for entry-level, DIY, and occasional weld operators. The VSi™ model is designed for industrial applications, featuring X-Mode™ Technology and an integrated grind shield that provides a 180° clear view.

Switching Speed: FS#10 1/3,600 | VS 1/23,000 | VSi 1/20,000 second
Operating Modes: FS#10 Weld and Grind | VS Weld, Cut and Grind
VSi Weld, Grind and X-Mode
Weight: FS#10 14 oz | VS 16 oz | VSi 23 oz

Meets ANSI Z87.1 + and CSA Z94.3 Standards



ClearLight™

X-Mode™
(VSi only)

Helmet Lighting†



Gen 1 Headgear
Enhanced support for all-day comfort



Auto On/Off
Lens automatically turns on at the strike of an arc

Two Independent Arc Sensors
Dependable arc detection (VSi has 3 arc sensors)

Shade Range
FS#10: 10
VSi: 8-13
VS: 5-13

Digital Controls
Intuitive design and large push buttons allow user to easily adjust mode and settings (VS model only)

3.0 Light State
Brighter light state that allows weld operators to keep their hood down, improving safety and productivity

Quick Release Cover Lens
Simplifies lens changes and reduces downtime

Integrated Grind Shield
Clear view for seamlessly switching from welding to grinding



FS#10 Flip-Up

VSi™

Black (VS)

Metalworks™ (VS)

Rise™ (VS)

Liberty™ (VS)

Metal Matrix™ (VS)

Hex™ (VS)

† Accessory sold separately

Digital Performance™ Series

Digital Performance™ Series welding helmets are ideal for commercial weld operators. With a lightweight design and upgraded features, these helmets are an excellent choice for cost-effective performance.

Switching Speed: 1/25,000 second

Operating Modes: Weld, Cut, Grind

Weight: 17 oz

Meets ANSI Z87.1 + and CSA Z94.3 Standards



ClearLight™ 2.0



AutoSense™



Premium Headgear



Helmet Lighting‡



Gen 3.5 Headgear

Flexible, ergonomic design provides enhanced support, stability and comfort

Quick Release Cover Lens

Simplifies lens changes and reduces downtime

3.0 Light State

Brighter light state that allows weld operators to keep their hood down, improving safety and productivity

Shade Range

Weld: 8-13
Cut: 5-8

Half Shade Settings

For precise shade adjustments



Auto On/Off

Lens automatically turns on at the strike of an arc

Three Independent Arc Sensors

Provides consistent lens response for obstructed or low amp welding

Digital Controls

Intuitive design and large push buttons allow user to easily adjust mode and settings



Black



Blue Rage™



Crusher™



'64 Custom™



Unity™

Digital Elite™ Series

Digital Elite™ Series welding helmets are ideal for commercial and industrial weld operators looking for all the features without the extra weight of a large lens.

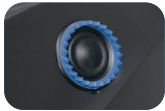
Meets ANSI Z87.1 + and CSA Z94.3 Standards

- Switching Speed:** 1/25,000 second
- Operating Modes:** Weld, Cut, Grind, X-Mode™
- Weight:** 18 oz

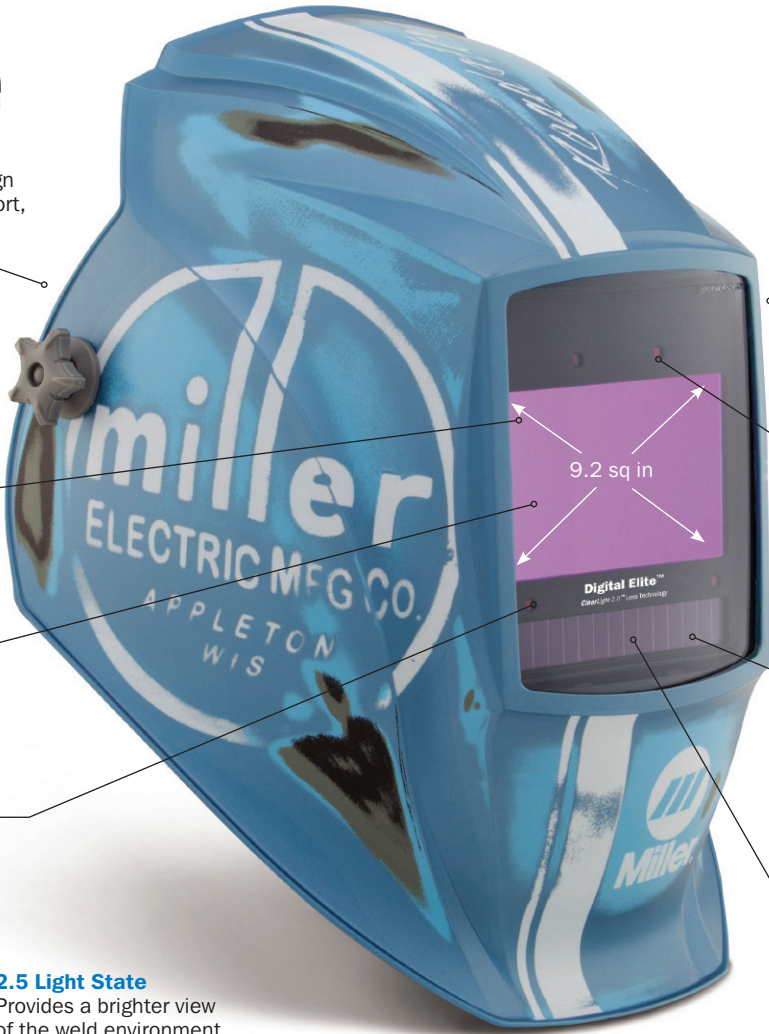
- 4 YEAR WARRANTY**
- ClearLight™ 2.0**
- X-Mode™**
- InfoTrack™ 2.0**
- AutoSense™**
- Premium Headgear**
- Helmet Lighting†**
- Memory Function**



Gen 3.5 Headgear
Flexible, ergonomic design provides enhanced support, stability and comfort



External Grind Control
Switch to grind mode with the push of a button (Black with External Grind only)



3.0 Light State
Brighter light state that allows weld operators to keep their hood down, improving safety and productivity

Four Independent Arc Sensors
Provides consistent lens response for obstructed or low amp welding

Shade Range
Weld: 8-13
Cut: 5-8

Auto On/Off
Lens automatically turns on at the strike of an arc

Half Shade Settings
For precise shade adjustments

Digital Controls
Intuitive design and large push buttons allow user to easily adjust mode and settings

Quick Release Cover Lens
Simplifies lens changes and reduces downtime

2.5 Light State
Provides a brighter view of the weld environment



‡ Accessory sold separately

Digital Infinity™ Series

Digital Infinity™ Series welding helmets are ideal for commercial and industrial weld operators who need an extra large viewing area for maximum visibility.

Meets ANSI Z87.1 + and CSA Z94.3 Standards



ClearLight™ 2.0

X-Mode™

InfoTrack™ 2.0



AutoSense™

Premium Headgear

Helmet Lighting†

Memory Function

Switching Speed: 1/25,000 second

Operating Modes: Weld, Cut, Grind, X-Mode™

Weight: 21.7 oz



Gen 3.5 Headgear

Flexible, ergonomic design provides enhanced support, stability and comfort

3.0 Light State

Brighter light state that allows weld operators to keep their hood down, improving safety and productivity

Shade Range

Weld: 8-13
Cut: 5-8

Oversized Viewing Area

Largest viewing area for maximum visibility

Half Shade Settings

For precise shade adjustments



Quick Release Cover Lens

Simplifies lens changes and reduces downtime

Four Independent Arc Sensors

Provides consistent lens response for obstructed or low amp welding

Auto On/Off

Lens automatically turns on at the strike of an arc

Digital Controls

Intuitive design and large push buttons allow user to easily adjust mode and settings

13.4 sq in



Black



Departed™



Stars and Stripes™



Relic™



Imperial™



Black Ops™

T94™ Series

T94™ Series welding helmets maximize comfort, visibility and productivity for weld operators who work in demanding industrial environments.

Switching Speed: 1/25,000 second

Operating Modes: Weld, Cut, Grind, X-Mode™

Weight: T94™ 21.1 oz | T94i™ 26 oz | T94i™ XL 28 oz



Gen 4 Headgear

Oversized back pad and multiple head straps for a secure fit that eliminates overtightening

Shade Range

Weld: 8-14
Cut: 5-8

Half Shade Settings

For precise shade adjustments

3.0 Light State

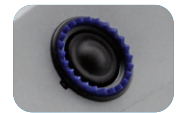
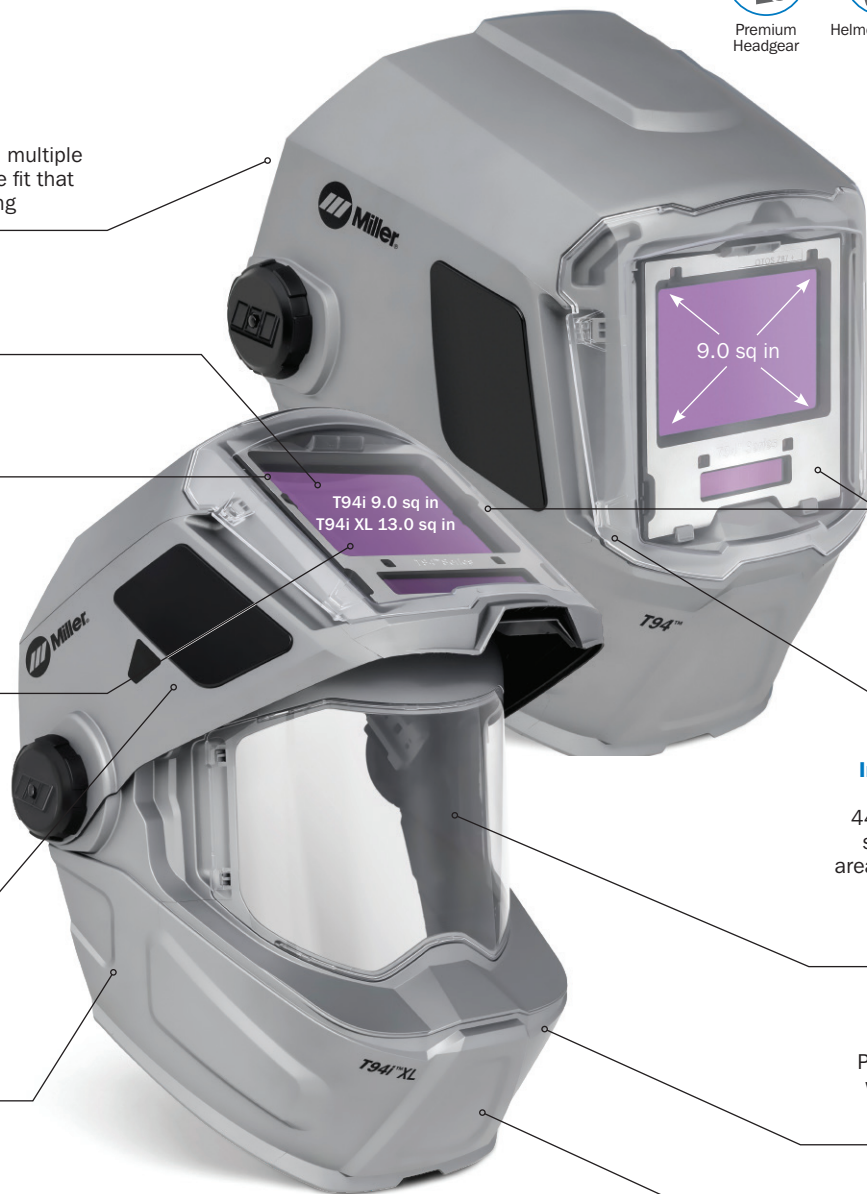
Brighter light state that allows weld operators to keep their hood down, improving safety and productivity

Shade 5.0 Side Windows

Enhances peripheral vision, amplifying sense of surroundings

Lightweight

Well-balanced design reduces neck torque, minimizing fatigue and neck strain



External Grind Control (T94™)

Switch to grind mode with the push of a button

Aluminum Heat Shield
Protects the lens in high amperage applications

Quick Release HDV Cover Lens

Simplifies lens changes and reduces downtime

Integrated HDV Grind Shield (T94i™ & T94i™ XL)

44 square inch integrated grind shield provides a clear viewing area for grinding and other tasks, increasing helmet-on time, decreasing the potential for eye injuries

Chiseled Shell Design

Provides optimal skin coverage while easily accommodating a Miller® Half Mask Respirator

Matte Silver Finish

Reflects ambient heat, keeping the user cooler

Meets ANSI Z87.1 + and CSA Z94.3 Standards



Premium Headgear

Helmet Lighting[‡]

Memory Function

HDV Technology



T94™

T94i™

T94i™ XL

‡ Accessory sold separately

Visit MillerWelds.com/T94 to learn more

Weld-Mask™

Weld-Mask™ Auto-Darkening goggles are the most versatile head and face protection for welding in tight spaces – allowing access where traditional helmets don't fit and ideal for use with hard hats.

Switching Speed: Weld-Mask™ 1/15,000 | Weld-Mask™ 2 1/25,000

Operating Modes: Weld-Mask™ Weld | Weld-Mask™ 2 Weld, X-Mode™

Weight: Weld-Mask™ 7.8 oz | Weld-Mask™ 2 11.8 oz

Meets CE/ANSI/CSA/AS NZ Standards



X-Mode™
(Weld-Mask 2 only)

Up to **40% LIGHTER** than traditional helmets

Flashlight Accessory

Converts Weld-Mask™ 2 into a headlamp, freeing both hands for welding

Lens

Wide, singular lens provides unmatched auto-darkening range of visibility

Eye Coverage

Soft close-fitting eye covering provides total darkness for precision welding



External Controls

Provides quick and convenient access

Shade Range

5,7,9,11 and 13



Weld-Mask™ 2

Eye Coverage

Soft close-fitting eye covering provides total darkness for precision welding



External Controls

Provides quick and convenient access

Shade Range

5-13



Weld-Mask™



Comfort & Compliance

Miller® LPR-100™ Half Mask Respirator and safety glasses easily fit under Weld-Mask™ 2

Head Cover

Flame retardant material provides coverage for UV/IR rays and applications with limited spatter

Face Shield

Face Shields are designed to provide industrial strength, maximum protection and extreme durability in various welding applications.

Lens Dimensions: 8.4 x 8.6 x 0.8 in.
Weight: 4.4 oz

Meets ANSI Z87.1 + and CSA Z94.3 Standards

Targeted Applications

- Grinding
- Oxy-Fuel Cutting
- Grinding
- Wire Brushing
- Plasma Cutting
- Brazing
- Soldering



Headgear and Crown

Simplistic ratchet system used to adjust for fit and comfort; integrated with crown to easily switch out replacement lenses



Lightweight Design

For all-day wear and comfort

Polycarbonate Material

Provides up to 99.9% UVA/UVB/UVC protection to help prevent eye damage

Anti-Fog Coating

Prevents fogging for enhanced visibility (Clear + Anti-Fog)

High-Definition View (HDV) Technology

A sharp, detailed view at any angle with minimal distortion

Durable Protection

Impact-resistant shield for increased durability and protection



Clear



Clear + Anti-Fog



Shade 3



Shade 5



Helmet Selection Chart

Choosing a helmet that is best suited for specific applications can increase productivity, weld quality, safety and comfort.

	Classic FS#10 Flip-Up	Classic Variable Shade	Classic VSi™
Viewing Area	5.1 sq in	6.0 sq in	5.9 sq in
ClearLight™ Lens Technology	Yes	Yes	Yes
X-Mode™	No	No	Yes
InfoTrack™ 2.0	No	No	No
AutoSense™	No	No	No
Memory Function	No	No	No
HDV Technology	No	No	No
Shades	Grind: 3 Weld: 10	Grind: 3 Cut: 5-8 Weld: 8-13	Grind: 3 Weld: 8-13
Modes	Weld/Grind	Weld/Cut/Grind	Weld/Grind/X-Mode
Integrated Grind Shield	Yes	No	Yes
External Grind Button	No	No	No
Auto-on	Yes	Yes	Yes
Sensors	2	2	3
TIG Rating	20 amps	5 amps/below	5 amps/below
Switching Speed	1/3,600	1/23,000	1/20,000
Digital Controls	No	Yes	No
Premium Headgear	No	No	No
Weight	14 oz (396 g)	16 oz (454 g)	23 oz (652 g)

Head & Face Protection
Personal Protective Equipment

Digital Performance™ Series	Digital Elite™ Series	Digital Infinity™ Series	T94™ Series		
7.2 sq in	9.2 sq in	Largest View 13.4 sq in	9 sq in 13.0 sq in (T94i XL)		
Yes - 2.0	Yes - 2.0	Yes - 2.0	Yes - 2.0		
No	Yes	Yes	Yes		
No	Yes - 2.0	Yes - 2.0	Yes - 2.0		
Yes	Yes	Yes	No		
No	Yes	Yes	Yes		
No	No	No	Yes		
Grind: 3 Cut: 5-8 Weld: 8-13	Grind: 3 External Grind: 2.5 Cut: 5-8 Weld: 8-13	Grind: 3 Cut: 5-8 Weld: 8-13	Grind: 3 Cut: 5-8 Weld: 8-14		
Weld/Cut/Grind	Weld/Cut/Grind/X-Mode	Weld/Cut/Grind/X-Mode	Weld/Cut/Grind/X-Mode		
No	No	No	No (T94) Yes (T94i and T94i XL)		
No	Yes (Black External Grind version only)	No	Yes		
Yes	Yes	Yes	Yes		
3	4	4	4		
5 amps	5 amps/below	5 amps/below	3 amps/below		
1/25,000	1/25,000	1/25,000	1/25,000		
Yes	Yes	Yes	Yes		
Yes	Yes	Yes	Yes		
17 oz (482 g)	18 oz (510 g)	21.7 oz (615 g)	T94 21.1 oz (598 g)	T94i 26 oz (737 g)	T94i XL 28 oz (794 g)

Ordering Information

CLASSIC SERIES

287798	Black – FS #10 2x4 Flip-Up
287803	Black – Variable Shade
287794	Black – VSi™
287810	Metalworks™
287815	Rise™
287820	Liberty™
288519	Metal Matrix™
291189	Hex™
231411 / 231411B	Front Cover Lens (FS #10 2x4 Flip-Up and VS) - 5 pack / 50 pack (bulk)
235628	Front Cover Lens (VSi™) - 5 pack
770237 / 770237B	Inside Cover Lens - (FS #10 2x4 Flip-Up) - 5 pack / 50 pack (bulk)
231410	Inside Cover Lens (VS and VSi™) - 5 pack
261830	Replacement Grind Shield (FS #10 2x4 Flip-Up)
245818	Replacement Grind Shield (VSi™)
287830	<i>ClearLight™</i> Auto-Darkening Lens (FS#10 Flip-Up)
287806	<i>ClearLight™</i> Auto-Darkening Lens (VS)
200541	<i>ClearLight™</i> Auto-Darkening Lens (VSi)

DIGITAL PERFORMANCE™ SERIES

289842	Black
289802	Blue Rage™
289807	'64 Custom™
289808	Crusher™
282006	Unity™
231921 / 231921B	Front Cover Lens - 5 pack / 50 pack (bulk)
770237 / 770237B	Inside Cover Lens - 5 pack / 50 pack (bulk)
289779	<i>ClearLight™</i> 2.0 Auto-Darkening Lens

DIGITAL ELITE™ SERIES

289755	Black
289756	Lucky's Speed Shop™
289759	Stars and Stripes™ III
289762	Inferno™
289764	Vintage Roadster™
289768	Raptor™
289844	Gear Box™
281010	Blue Rage™ II
288924	Black with External Grind
216326 / 216326B	Front Cover Lens - 5 pack / 50 pack (bulk)
216327 / 216327B	Inside Cover Lens - 5 pack / 50 pack (bulk)
289753	<i>ClearLight™</i> 2.0 Auto-Darkening Lens (Black And Graphics)
289876	<i>ClearLight™</i> 2.0 Auto Darkening Lens (Black External Grind)

DIGITAL INFINITY™ SERIES

289714	Black
289715	Black Ops™
289720	Departed™
288420	Stars and Stripes™
288722	Relic™
288725	Imperial™
284218	Replacement Headgear
271320	Front Cover Lens - 5 pack
271319	Inside Cover Lens - 5 pack
289713	ClearLight™ 2.0 Auto-Darkening Lens

T94™ SERIES

288758	T94™
288759	T94i™
287768	T94i™ XL
260486	Replacement Headgear
287016 / 287016B	Front Cover Lens - 5 pack / 50 pack (bulk)
216327 / 216327B	T94™ and T94i™ Inside Cover Lens - 5 pack / 50 pack (bulk)
287777 / 287777B	T94i™ XL Inside Cover Lens
288765	Replacement HDV Grind Shield
258853	HDV Tear-Away Grind Shield
260197	Side Window Covers
289871	T94™ Auto-Darkening Lens
289874	T94i™ Auto-Darkening Lens
287778	T94i™ XL Auto-Darkening Lens

WELD-MASK™ SERIES

267370	Weld-Mask™
267420	Weld-Mask™ Front Cover Lens - 5 pack
267421	Weld-Mask FR Head Cover**
270055	CR2032 Replacement Battery
280982	Weld-Mask™ 2
280985	Weld-Mask™ 2 Front Cover Lens - 5 pack
280983	Weld-Mask™ 2 FR Head Cover**
285757	Weld-Mask™ Hard Hat Adapter
217043	CR2450 Replacement Battery
281188	Weld-Mask™ 2 Light Accessory Kit*

FACE SHIELD SERIES

288269	Clear
288274	Clear + Anti-Fog
288270	Shade 3
288273	Shade 5
288275	Clear Replacement Lens
288278	Clear + Anti-Fog Replacement Lens
288276	Shade 3 Replacement Lens
288277	Shade 5 Replacement Lens

*Optional accessory

**For use with Weld-Mask auto-darkening goggles, or under a traditional welding helmet for added protection

Customer Reviews

T94™ Series

"This helmet is amazing. The clarity when welding or grinding is outstanding. The side visibility is the one more thing that makes this helmet absolutely a must have for me. This helmet has become the go-to for everyone." - **Justin**

Digital Infinity™ Series

"I bought this for automotive restoration use. This is the only self darkening helmet that I will use for outdoor welding because of the X-Mode™. It's very easy to adjust. The viewing area is large and ClearLight™ makes it even better." - **Charles**

Digital Elite™ Series

"I use it to MIG weld 10 hours a day, 5 days a week. Performs great!" - **Luis**

Digital Performance™ Series

"This is an excellent welding hood at a great price point. It functions exactly as it should and it is extremely reliable. I use this hood at home and at work for welding all across the board. From TIG, stick and MIG to using the torches and plasma to cut what I need. Can't go wrong with this hood." - **William**

Classic Series

"Love this helmet. Does everything I want it to and then some. The product works flawlessly and the controls are easy to use and understand. The helmet is comfortable and lightweight compared to other helmets." - **Donald**

