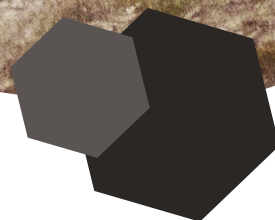


ALCHEMIS PROTECT[®]

Managed Data Availability:
Because Unnecessary Risk is just Unnecessary



silverstring
delivering global data protection



One of your servers will fail

One of your people will delete a critical file

You will have a Subject Access Request to comply with

Sooner or later, you will be hit by a ransomware attack

Some might say that for any CIO, this is the stuff of sleepless nights. But we know better. Deep down, it's not fear of an event that blindsides you in the early hours. It's actually the thought of the restore - and what happens next - that's keeping you awake.

It's that nagging feeling that your backup isn't going to come back.

“

But surely, don't we have backups?
Shouldn't we have seen this coming?
What exactly are we paying for each month?

”

As the repercussions of a data loss sink in, the post-mortem begins. You try to explain what's involved in manually managing backups for a complex data estate. You might even remind them of your ever-expanding to-do list - and of the recent round of IT department budget cuts.

But all of this falls on deaf ears. For your board, it's not the data loss that's unacceptable. It's what the business has lost as a result.

That's why, thanks to Alchemis Protect from Silverstring, you no longer have to accept the unacceptable. At heart, we're in the business of making CIOs sleep easy.

We're Who You Choose When You Can't Afford To Lose: The Sleep Easy Guarantee

Data doesn't get lost on our watch and to prove it, we put the fees for an entire quarter on the table. If your data doesn't come back, then you don't pay us for that three-month period.

No gimmicks. No fuss. We call it the Sleep Easy Guarantee.





Are you managing your data availability risks - or hoping for the best?

Ensuring data availability is a Cinderella task. You won't be thanked for it. In fact, some in your organisation might assume that it "just happens". But somewhere along the line, ensuring backups that you can count on stopped being easy or routine. Here's why:

Data growth

There's more of it. A lot more, in fact. Worldwide over the next decade, data volumes are expected to increase tenfold and businesses are expected to be responsible for the bulk of this growth. From customer service through to resource planning, this increased volume impacts each part of your business. It's what drives innovation. It's your most valuable resource.

Faced with this growth, it is harder than ever to plan, budget for and deploy the storage and backup infrastructure needed to keep up with this change.

New ways of working lead to new data categories

Alongside a boost in data volume, you are also likely to be experiencing a proliferation in data categories especially in areas such as personalised data profiles and information from smart devices.

Ensuring the availability of these large, complex datasets, raises additional data management challenges.

The move to Cloud technologies

Only very rarely is it possible, or desirable, to shift your entire data to the Cloud. With a hybrid data estate, comes the gradual build-up of multiple tools to address your backup needs across multiple locations. This, combined with the introduction of ever-more SaaS applications means having to juggle multiple tools to meet your backup needs. Staying in control becomes more of a challenge.

The very real threat of your data not coming back

The changing shape and nature of your data estate, coupled with external challenges all increase the likelihood of a data availability crisis. Here's how:

Data deletion

The risk has always been there, but with higher volumes and a greater number of users comes an increased likelihood of accidental deletion.

Server loss

Data growth combined with scattered points of storage on-premise and in the Cloud: this means a stronger possibility that something, somewhere will fail.

Ransomware and other external threats

For growth stage companies and enterprises alike, the threat of an external attack is real. Adopting an 'Assume Breach stance' means recognising that it's not a case of if but when.

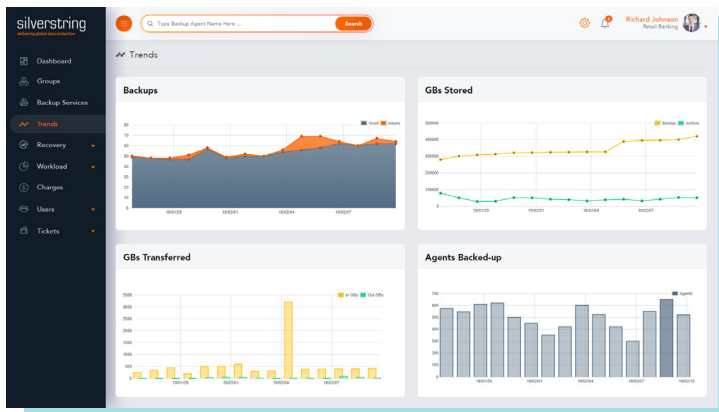
Compliance issues

Post-GDPR, it's now much more likely that customer data that doesn't come back will trigger the need to notify the Data Regulator. It can also prevent you from responding to subject access requests leading to the type of regulatory intervention and reputational damage that you could well do without.

Managed Data Availability: We take the rap - so you don't have to

Consolidate ▼

A single self-service portal meets all of your backup requirements for all data across all systems.

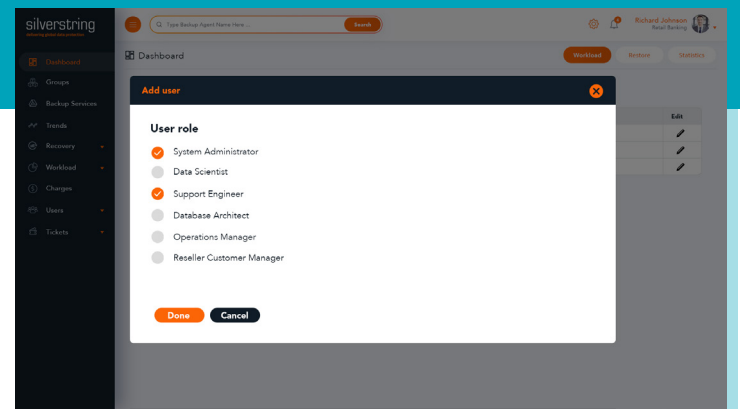


Prevent

Advanced machine learning automatically highlights the risk of non-recovery.

Upgrade

We manage all upgrades - so you don't have to. Regular refreshes ensure you always have access to best-in-class backup and recovery. All of this is managed by us via cloud roll-out, avoiding both capital expenditure and service disruption at your end.



Distinguish ▲

Because IT managers, data scientists, system administrators and application owners all have their own needs and access privileges, the Alchemis Protect portal responds to users based on role types.

Access

View your backup data in a way that makes sense to the people who need it. Get usage and billing reports segmented by application, owner or business group.

Simplify

A fully customisable service catalogue simplifies access to the services your people require. On-demand termination means that any service can be shut down as soon as it is no longer required.

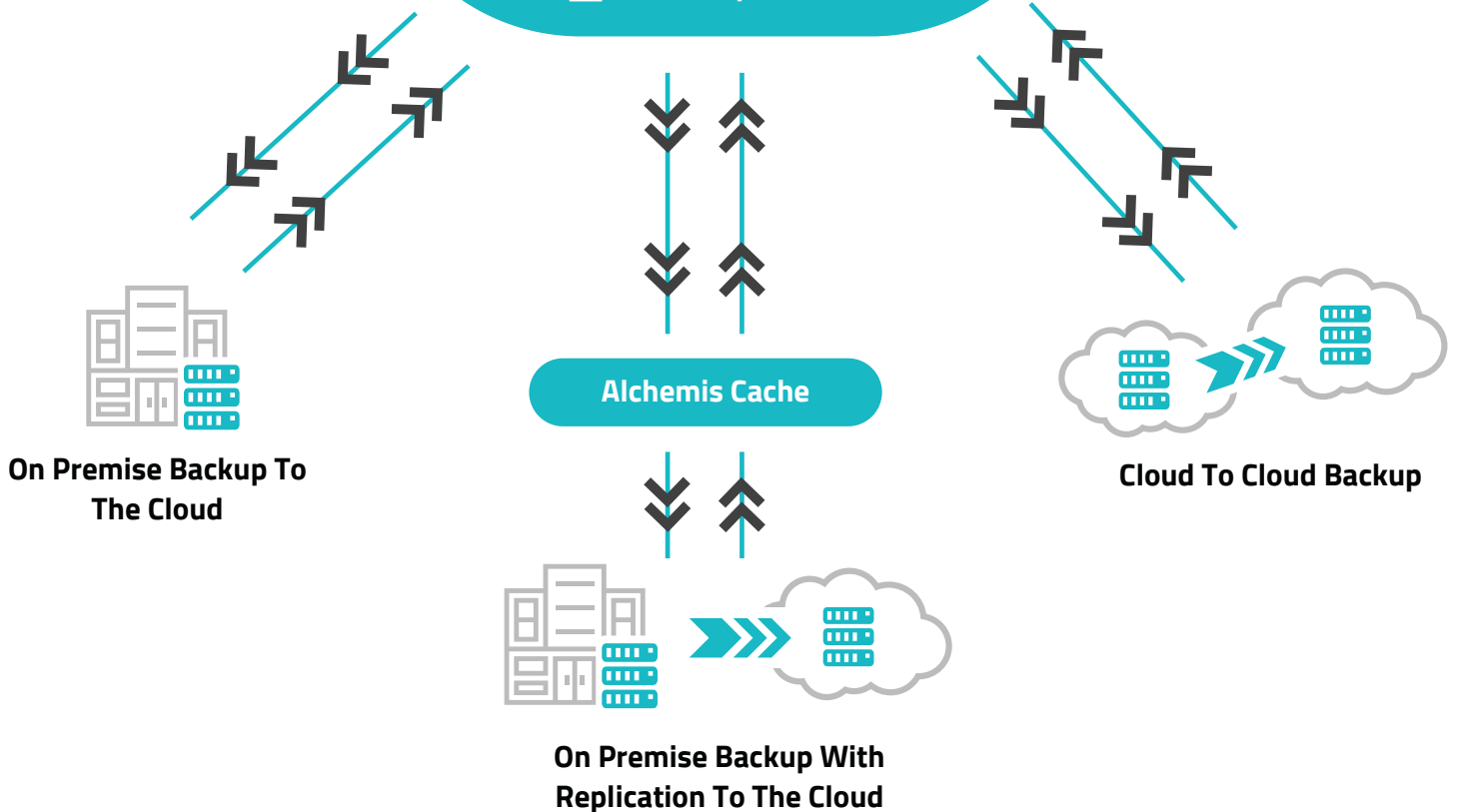
Designed for your environment: Sample Setups

SILVERSTRING CLOUD

Alchemis Protect User Portal

Infrastructure as a Service

Recovery Sandbox





Because Data is Only Useful When It's Accessible: What Alchemis Protect Means for You



Access your data, always

Guaranteed data availability, no matter where it resides and no matter what threats or events are around the corner.



The full potential of your data, realised

Derive more value from your backup than simply recovery. Reuse existing data sets for DevOps, Data Science and Business Analytics.



A single source for all your data protection needs

Remove the hassle of supporting multiple backup and recovery products.



We take care of availability, you focus on business value

Ditch the needless waste that comes with legacy data protection practices and redeploy your resources to more profitable ends.



Future capacity worries, banished

Scale up or down whilst only paying for what you use.



Enable workload migration

Recover any on-premise or cloud workload across your entire environment.

Supported Systems

	SUPPORTED
Supported Operating Systems ^{1,2}	
AIX	
AIX 7.1 (or later fix pack)	✓
AIX 7.2 (or later fix pack)	✓
Linux on POWER	
SUSE Enterprise 11	✓
Red Hat Enterprise 6	✓
Red Hat Enterprise 7	✓
Linux x86	
SUSE Enterprise 11	✓
SUSE Enterprise 12	✓
SUSE Enterprise 15	✓
Windows	
Windows Server 2012	✓
Windows Server 2012 R2	✓
Windows Server 2016	✓
Supported Virtualisation Platforms	
VMware	
vSphere 6.0	✓
vSphere 6.5	✓
vSphere 6.7	✓
Hyper-V	
Windows Server 2012 R2	✓
Windows Server 2016	✓

1 - Agent Install required for physical Operating Systems

2 - Some advanced features only apply to Virtual Machines





silverstring

delivering global data protection



Bloxham Mill, Barford Road
Oxfordshire
OX15 4FF



+44 (0)844 8155 805



info@silverstring.com